

SPORT-TEK

Sport-Tek® Tall Side Blocked Micropique Sport-Wick® Polo. TST655



Smooth, snag-resistant and moisture-wicking micropique with colorblock panels.

- 3.8-ounce, 100% polyester tricot
- Snag resistant
- Double-needle stitching throughout
- Tag-free label
- Taped neck
- Colorblocking at sides, sleeves and back collar
- 3-button placket with dyed-to-match rubber buttons
- Set-in, open hem sleeves
- Side vents

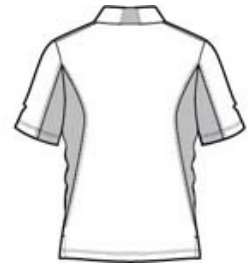
**Due to the nature of 100% polyester performance fabrics, special care must be taken throughout the screen printing process.*

CARE INSTRUCTIONS

Machine wash cold, gentle cycle with like colors. Use mild detergent, remove immediately. Do not allow to lay on itself when wet. Do not bleach. Tumble dry low.



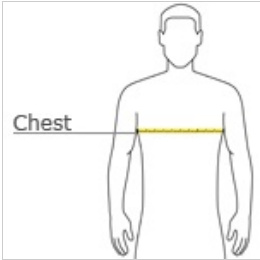
front



back

[Tips For Effectively Screen Printing Polyester Fabrics](#)

HOW TO MEASURE



CHEST WIDTH

Measure under the arm and around the fullest part of the chest with arms down, keeping tape horizontal.

SIZE CHART

| | LT | XLT | 2XLT | 3XLT | 4XLT |
|-------|-------|-------|-------|-------|-------|
| Chest | 41-43 | 44-46 | 47-49 | 50-53 | 54-57 |

COLOR INFORMATION

| | | | | | | | | | | |
|---------------------------------------|--------------------------------|-------------------------------------|------------------------------------|-------------------|---------------------------|----------------------------------|------------------------------|-------------------------------|------------------------------|---------------------------------|
| | | | | | | | | | | |
| Black/ Deep Orange PMS NTR BLACK C | Black/ Gold PMS NTR BLACK C | Black/ Iron Grey PMS NTR BLACK C | Black/ True Red PMS NTR BLACK C | Black/ True Royal | Black/ White PMS 426 C | Forest Green/ White PMS 553 C | True Navy/ Gold PMS 533 C | True Navy/ White PMS 533 C | True Red/ White PMS 200 C | True Royal/ White PMS 7687 C |