



Why did we name this stretchable 1/2-zip the 1.5? Because it's light enough to wear as a tee, but warm enough to be a light layer.

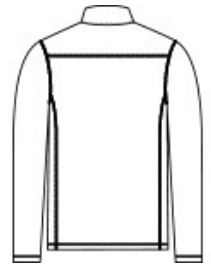
- 5.6-ounce, 88/12 poly/spandex
- Removable tag for comfort and relabeling
- Reverse coil zipper
- Coverstitch seams throughout
- Open cuffs and hem

**CARE INSTRUCTIONS**

Machine wash with like colors. Do not use fabric softener, only non-chlorine bleach, when needed. Tumble dry low, remove promptly. Cool iron if necessary. Do not dry clean.



front



back

**HOW TO MEASURE**



**CHEST WIDTH**

Measure under the arm and around the fullest part of the chest with arms down, keeping tape horizontal.

**SIZE CHART**

	XS	S	M	L	XL	2XL	3XL	4XL
Chest	32-34	35-37	38-40	41-43	44-46	47-49	50-53	54-57

**COLOR INFORMATION**



Dark Denim Heather  
PMS 2380C



Graphite Heather  
PMS COOL GRAY 11C



Grey Heather  
PMS COOL GRAY 10C



True Royal Heather