



# Russell Outdoors™ Realtree® Long Sleeve Pocket Tee RU100LSP

A must-have for anyone who loves the outdoor lifestyle. It's perfect as a base layer or stand-alone tee, whether for everyday work and play or if you're headed out for adventure.

- 5.5-ounce, 100% ring spun combed cotton
- Tag-free label
- Realtree EDGE® print
- Edge stitching around neck helps stabilize rib for better wash and wear
- Shoulder-to-shoulder neck taping
- Left chest pocket
- Side seams
- Exterior woven Russell Outdoors™ tab at hem

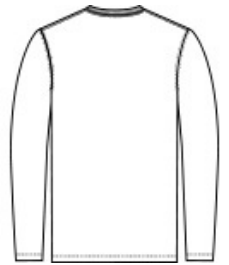
*The camo print is pigment-dyed. Special consideration must be taken when printing white ink on pigment-dyed cotton.*

### CARE INSTRUCTIONS

Machine Wash Cold With Like Colors. Do Not Use Fabric Softener. Do Not Bleach. Tumble Dry Low. Remove Promptly. Cool Iron If Needed.



front



back

### HOW TO MEASURE



#### CHEST WIDTH

Measure under the arm and around the fullest part of the chest with arms down, keeping tape horizontal.

### SIZE CHART

	XS	S	M	L	XL	2XL	3XL	4XL
Chest	32-34	35-37	38-40	41-43	44-46	47-49	50-53	54-57

### COLOR INFORMATION

**Please note: PMS code information is shown only when an exact match is available.**



Realtree Edge