



OGIO® Luuma Flex Hooded Henley OG826



Cozy but refined, this OGIO look is elevated enough for the office but also perfect for travel.

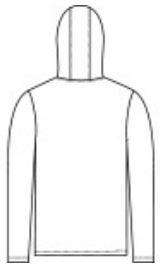
- 7.1-ounce, 57/38/5 modal/poly/spandex French terry
- OGIO heat transfer label for tag-free comfort
- 3-panel hood
- Angled, forward side seams
- 3-snap placket with matte black molded snaps with debossed O
- Silver reflective O heat transfer on left sleeve

CARE INSTRUCTIONS

Machine Wash Cold With Like Colors. Do Not Use Fabric Softener. Do Not Bleach. Tumble Dry Low. Remove Promptly. Cool Iron If Necessary.



front



back

HOW TO MEASURE



CHEST WIDTH

Measure under the arm and around the fullest part of the chest with arms down, keeping tape horizontal.

SIZE CHART

	XS	S	M	L	XL	2XL	3XL	4XL
Chest	32-34	35-37	38-40	41-43	44-46	47-49	50-53	54-57

COLOR INFORMATION

Please note: PMS code information is shown only when an exact match is available.



Blacktop
PMS BLACK C



Deep Olive



Petrol Grey
Heather
PMS COOL GREY
10C