



# OGIO® Evolution Polo OG147



Let your style evolve from ho-hum to cutting-edge in this ultra-soft OGIO look that performs with moisture wicking and stretch.

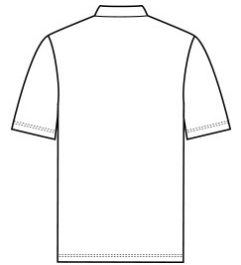
- 5-ounce, 83/12/5 poly/rayon/spandex twill jersey with stay-cool wicking technology
- OGIO heat transfer label for tag-free comfort
- 3-button placket
- Clear smoke grey buttons
- Forward shoulders
- Embroidered O on left sleeve

### CARE INSTRUCTIONS

Machine Wash Cold With Like Colors. Do Not Use Fabric Softener. Do Not Bleach. Tumble Dry Low. Cool Iron.



front



back

### HOW TO MEASURE



#### CHEST WIDTH

Measure under the arm and around the fullest part of the chest with arms down, keeping tape horizontal.

### SIZE CHART

	XS	S	M	L	XL	2XL	3XL	4XL
Chest	32-34	35-37	38-40	41-43	44-46	47-49	50-53	54-57

### COLOR INFORMATION

Please note: PMS code information is shown only when an exact match is available.



Blacktop  
PMS BLACK C



River Blue Navy  
PMS 533C



Tarmac Grey  
PMS 7540C