



OGIO® Impact Jacket. OE750

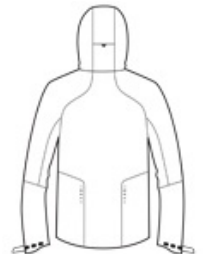


WATERPROOF
 FULLY SEAM-SEALED
 WIND-RESISTANT
 VENTING PIT ZIPS
 STRETCH
 REFLECTIVE DETAILS

- 100% poly laminated shell w ith stretch tricot lining
- 10,000MM fabric waterproof rating
- 10,000G/M2 fabric breathability rating
- Reflective OGIO heat transfer label
- Adjustable hood w ith draw cord and toggles
- Reflective O heat transfer at right chest
- Reflective O heat transfer at hood
- Decoration access pocket
- Set-in sleeves w ith adjustable self-fabric tab cuffs, welded hook and loop closures and reflective OGIO heat transfers
- Reflective O heat transfer at left sleeve
- Reflective stacked O heat transfers at low er back panels
- Slight drop tail hem w ith draw cord and toggles
- Reflective OGIO heat transfer at interior back

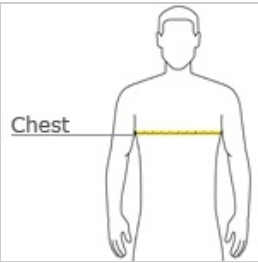


front



back

HOW TO MEASURE



CHEST WIDTH

Measure under the arm and around the fullest part of the chest w ith arms dow n, keeping tape horizontal.

SIZE CHART

	XS	S	M	L	XL	2XL	3XL	4XL
Chest	32-34	35-37	38-40	41-43	44-46	47-49	50-53	54-57

COLOR INFORMATION

Please note: PMS code information is shown only when an exact match is available.



Blacktop
 PMS BLACK C