

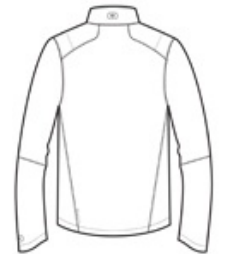


WATER-RESISTANT
 WIND-RESISTANT
 STRETCH
 TONAL EMBOSSED O PATTERN
 REFLECTIVE DETAILS

- 100% poly stretch shell bonded to textured grid fleece with a laminated film insert for wind and water resistance
- 3,000MM fabric waterproof rating
- 3,000G/M2 fabric breathability rating
- Waterproof center front zipper
- Articulated shaping for ease of movement
- Reflective OGIO Endurance heat transfer label for tag-free comfort
- Zip-through collar
- Reflective O heat transfer at back neck
- Embossed O pattern at shoulder
- Waterproof zippered chest pocket with textured welding details
- Lower front zippered pockets with textured welding details
- Set-in sleeves with shaped cuffs
- Reflective O heat transfer at left cuff
- Slight drop tail hem with reflective O Endurance heat transfer at back left hem

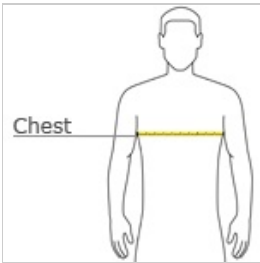


front



back

HOW TO MEASURE



CHEST WIDTH
 Measure under the arm and around the fullest part of the chest with arms down, keeping tape horizontal.

SIZE CHART

	XS	S	M	L	XL	2XL	3XL	4XL
Chest	32-34	35-37	38-40	41-43	44-46	47-49	50-53	54-57

COLOR INFORMATION



Blacktop
 PMS NTR BLACK
 C

Gear Grey
 PMS 425C