

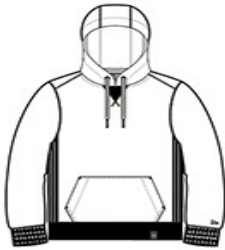


New Era® French Terry Pullover Hoodie. NEA500



This super-soft hoodie is great for lounging but can also amp up your street style.

- 9.4-ounce, 52/48 cotton/poly sueded French terry
- Coverstitched seams
- Lined and twill-taped 3-panel hood
- Woven New Era patch label
- Black nickel grommets
- Wide drawcords with New Era metal tips
- Rib knit V inset at neck
- Rolled-forward shoulders
- Rib knit side panels
- Front pouch pocket
- Embroidered New Era flag logo on left sleeve
- Rib knit cuffs and hem
- Woven New Era badge at hem



front



back

CARE INSTRUCTIONS

Machine wash cold with like colors. Do not use fabric softener, tumble dry low, remove promptly, only non-chlorine bleach when needed, cool iron if necessary, do not dry clean.

HOW TO MEASURE




CHEST WIDTH
Measure under the arm and around the fullest part of the chest with arms down, keeping tape horizontal.


SIZE CHART

	XS	S	M	L	XL	2XL	3XL	4XL
Chest	32-34	35-37	38-40	41-43	44-46	47-49	50-53	54-57


COLOR INFORMATION




Black
PMS NTR BLACK
C




Black Twist
PMS NTR BLACK
C



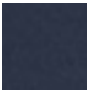
Dark Royal Twist
PMS 2768C




Graphite
PMS 7540C



Light Graphite
Twist
PMS COOL GRAY
10C



True Navy
PMS 533C



True Navy Twist
PMS 533C