



Combining the smart tailoring of a woven shirt with the movement and comfort of a soft knit, this shirt eases between night and day. The polished silhouette complements office wear, while the moisture-wicking fabric makes it perfect for post-work play. A back yoke seam, notched vent hem, and satin-finished buttons extend the contemporary profile.

Fabric+Weight

- 5.5-ounce, 55/40/5 cotton/poly/spandex diamond pique

Features+Benefits

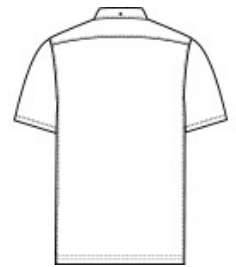
- Moisture-wicking
- Self-fabric, button-down collar
- Rimmed, black satin-finished buttons (White buttons on white)
- Back yoke
- Self-turned cuffs and hem
- Notched vents

CARE INSTRUCTIONS

Machine Wash Cold With Like Colors. Do Not Use Fabric Softener. Do Not Bleach. Tumble Dry Low. Warm Iron If Necessary.

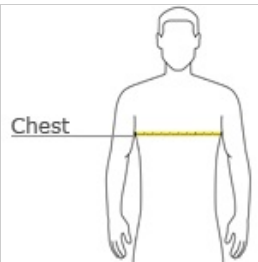


front



back

HOW TO MEASURE



CHEST WIDTH

Measure under the arm and around the fullest part of the chest with arms down, keeping tape horizontal.

SIZE CHART

	XS	S	M	L	XL	2XL	3XL	4XL
Chest	32-34	35-37	38-40	41-43	44-47	48-51	52-56	57-61

COLOR INFORMATION

Please note: PMS code information is shown only when an exact match is available.



Anchor Grey
PMS 426C



Anchor Grey
Heather
PMS 426C



Deep Black
PMS BLACK C



Parisian Blue
Heather
PMS 2149C



Sage Heather



Townsend Green



White