



Sport-Tek® Ladies Sport-Wick® Flex Fleece 1/4-Zip. LST561

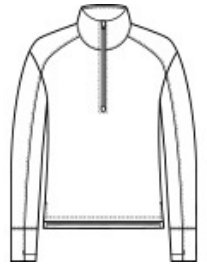


Make your move in Sport-Wick Flex Fleece. Lightweight with stretch, this fleece has a cotton hand, wicks moisture and delivers trend-right style.

- 7.4-ounce, 70/25/5 poly/rayon/spandex
- Tear-away removable label
- Cadet collar
- Self-fabric cuffs and hem
- Thumbholes for warmth

CARE INSTRUCTIONS

Machine wash cold with like colors. Do not use fabric softener. Only non-chlorine bleach, when needed. Tumble dry low. Remove promptly. Cool iron, if necessary. Do not dry clean.



front



back

HOW TO MEASURE



BUST

Measure under the arm and around the fullest part of the bust with arms down, keeping tape horizontal.

SIZE CHART

| | XS | S | M | L | XL | XXL | 3XL | 4XL |
|------|-------|-------|-------|-------|-------|-------|-------|-------|
| Size | 2 | 4/6 | 8/10 | 12/14 | 16/18 | 20/22 | 24/26 | 28/30 |
| Bust | 32-34 | 35-36 | 37-38 | 39-41 | 42-44 | 45-47 | 48-51 | 52-55 |

COLOR INFORMATION



Black
PMS BLACK C



Dark Grey Heather
PMS HEATHERED



Light Grey Heather
PMS COOL GRAY
PMS 533C



True Navy
PMS 533C



True Royal
PMS 7687C



White