



Sport-Tek® Ladies PosiCharge® Competitor™ Hooded Pullover. LST358



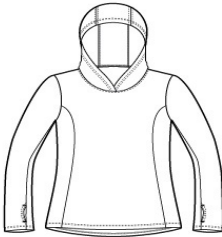
This lightweight hooded pullover locks in color and wicks moisture. It's versatile enough for year-round wear.

- 3.8-ounce, 100% polyester interlock with PosiCharge technology
- Removable tag for comfort and relabeling
- Three-panel hood
- Front princess seams
- Set-in sleeves
- Thumbholes to keep hands warm
- Open cuffs and hem

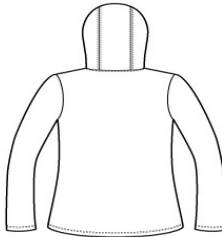
Due to the nature of 100% polyester performance fabrics, special care must be taken throughout the printing process.

CARE INSTRUCTIONS

Machine wash cold with like colors. Only non-chlorine bleach. When needed tumble dry low, remove promptly. Cool iron if needed. Do not use softener. Do not dry clean.



front



back

HOW TO MEASURE



BUST
Measure under the arm and around the fullest part of the bust with arms down, keeping tape horizontal.

SIZE CHART

	XS	S	M	L	XL	XXL	3XL	4XL
Size	2	4/6	8/10	12/14	16/18	20/22	24/26	28/30
Bust	32-34	35-36	37-38	39-41	42-44	45-47	48-51	52-55

COLOR INFORMATION



Black
PMS NTR BLACK



Iron Grey
PMS 7540C



Purple
PMS 7672C



Silver
PMS 429C



True Navy
PMS 533C



True Red



True Royal
PMS 7686C