

**Port Authority® Ladies Collective Smooth Fleece Vest L906**

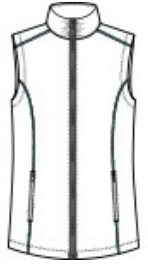


A smooth face, brushed back and coverstitching make this warm fleece vest a classier alternative to more casual fleece.

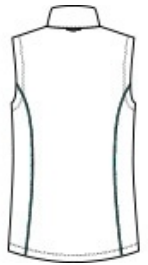
- Can be zipped in and secured by snap attachment inside an outer Collective layer
- 5.9-ounce, 100% polyester fleece
- Dyed-to-match and contrast coverstitch
- Slightly longer length
- Ruching at collar
- Molded center front zipper
- Front reverse-coil zippered pockets
- Tulip hem

**CARE INSTRUCTIONS**

Machine Wash Cold With Like Colors. Do Not Use Fabric Softener. Tumble Dry Low. Remove Promptly. Only Non-Chlorine Bleach When Needed. Cool Iron If Necessary. Do Not Dry Clean.



front



back

**HOW TO MEASURE**



**BUST**

Measure under the arm and around the fullest part of the bust with arms down, keeping tape horizontal.

**SIZE CHART**

	XS	S	M	L	XL	XXL	3XL	4XL
Size	2	4/6	8/10	12/14	16/18	20/22	24/26	28/30
Bust	32-34	35-36	37-38	39-41	42-44	45-47	48-51	52-55

**COLOR INFORMATION**



Deep Black PMS NTR BLACK  
 Graphite PMS 425C  
 C