



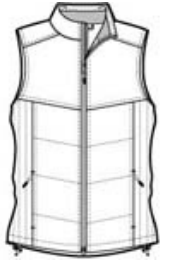
Keep the warmth centered on your core in our Puffy Vest. These styles are great for layering over a long sleeve shirt or under a jacket. Some feature a colorful lining.

- 100% polyester shell, 100% polyester lining with water-resistant finish, 6-ounce polyfill
- Zip-through cadet collar
- Reverse coil zipper
- Interior storm flap
- Interior zippered pocket
- Interior pocket with drawcord and toggle
- Front zippered pockets
- Port Pocket™ for easy embroidery access
- Open hem with drawcord and toggles for adjustability

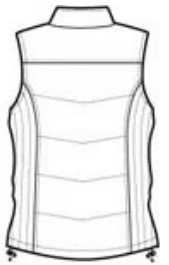
**CARE INSTRUCTIONS**

Machine wash cold with like colors. Use mild detergent. Do not bleach. Tumble dry low remove promptly. Cool iron if necessary. Do not dry clean.

[Tips For Effectively Screen Printing Polyester Fabrics](#)

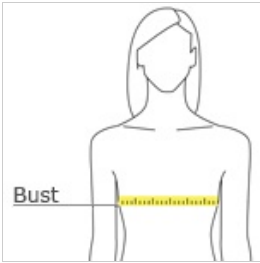


front



back

**HOW TO MEASURE**



**BUST**

Measure under the arm and around the fullest part of the bust with arms down, keeping tape horizontal.

**SIZE CHART**

|      | S     | M     | XS    | XXL   | 3XL   | 4XL   | L     | XL    |
|------|-------|-------|-------|-------|-------|-------|-------|-------|
| Size | 4/6   | 8/10  | 2     | 20/22 | 24/26 | 28/30 | 12/14 | 16/18 |
| Bust | 35-36 | 37-38 | 32-34 | 45-47 | 48-51 | 52-55 | 39-41 | 42-44 |

**COLOR INFORMATION**

|                                    |   |                               |   |                   |
|------------------------------------|---|-------------------------------|---|-------------------|
|                                    |   |                               |   |                   |
| Black/ Black<br>PMS NTR BLACK<br>C | Bright Berry/<br>Bermuda Purple<br>PMS 242C | Dark Slate/ Black<br>PMS 432C | Mediterranean<br>Blue/ Black<br>PMS 2118C | White/ Dark Slate |