

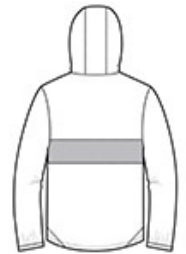


A zippered pocket keeps valuables accessible and secure in this element-beating anorak.

- 100% polyester shell
- 100% polyester mesh body and hood lining
- 100% polyester woven sleeve lining
- Tag-free label
- Three-panel hood with drawcord and toggles
- Angled chin guard for additional comfort
- Exposed molded zipper
- Stretch binding at cuffs
- Left side seam zipper for easy on/off
- Two pockets in one: front pocket includes a top zippered pocket to secure valuables
- Slight drop tail hem
- Drawcord hem with toggles



front



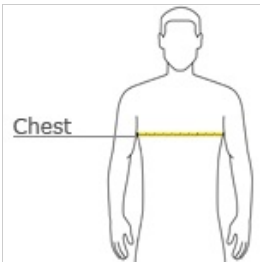
back

**CARE INSTRUCTIONS**

Machine wash cold. Gentle cycle with like colors. Use mild detergent and remove immediately. Do not allow to lay on itself when wet. Do not bleach. Tumble dry low. Cool iron, if needed.

[Tips For Effectively Screen Printing Polyester Fabrics](#)

**HOW TO MEASURE**








**CHEST WIDTH**

Measure under the arm and around the fullest part of the chest with arms down, keeping tape horizontal.

**SIZE CHART**

	XS	S	M	L	XL	2XL	3XL	4XL
Chest	32-34	35-37	38-40	41-43	44-46	47-49	50-53	54-57

**COLOR INFORMATION**

				
Black/ Black PMS NTR Black C PMS 200C	Black/ True Red PMS 200C	Black/ True Royal PMS 7686C	Graphite/ Black	True Navy/ White PMS 533C