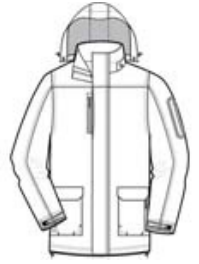




Designed to take on unforgiving weather, our parka is warm and versatile. With a 6-ounce polyfill-lined body and 4-ounce polyfill-lined sleeves, this fully seam-sealed parka offers substantial protection. In the harshest conditions, it can be worn over our Down Jacket (J323, sold separately) for increased protection.

- 100% polyester shell, 100% polyester quilted lining
- 8000MM fabric waterproof rating
- Fully seam-sealed for added waterproof protection
- 3000G/M² fabric breathability rating
- Snap-off adjustable hood
- Storm flap
- Two-way Vislon zipper with ergonomic pull
- Waterproof welded sleeve pocket
- Waterproof zippered pockets
- Hand warmer pocket
- Bellow pockets for storage
- Molded adjustable tab cuffs with hook and loop closures
- Interior media pocket
- Open hem with drawcord and toggles
- Port Pocket™ for easy embroidery access



front



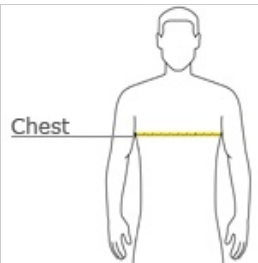
back

**CARE INSTRUCTIONS**

Hand wash only, non-chlorine bleach. Do not dry clean. Do not tumble dry.

[Tips For Effectively Screen Printing Polyester Fabrics](#)

**HOW TO MEASURE**



**CHEST WIDTH**

Measure under the arm and around the fullest part of the chest with arms down, keeping tape horizontal.

**SIZE CHART**

	XS	S	M	L	XL	2XL	3XL	4XL
Chest	32-34	35-37	38-40	41-43	44-46	47-49	50-53	54-57

**COLOR INFORMATION**



Black PMS NTR BLACK  
 Royal PMS 3597C