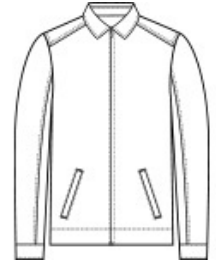


A classic style in an updated silhouette, this rugged soft shell has a clean, sophisticated exterior with water- and wind-resistance so it performs in outdoor and casual workplaces.

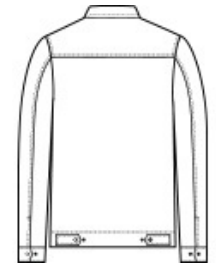
- 100% polyester woven shell bonded to a water-resistant film insert and a 100% polyester microfleece lining
- 1000MM fabric waterproof rating
- 1000G/M2 fabric breathability rating
- Water-resistant finish
- Metal center front zipper
- Open hand pockets
- Adjustable snap cuffs and hem

CARE INSTRUCTIONS

Machine Wash Cold With Like Colors. Only Non-Chlorine Bleach When Needed. Tumble Dry Medium. Cool Iron If Necessary.



front



back

HOW TO MEASURE



CHEST WIDTH

Measure under the arm and around the fullest part of the chest with arms down, keeping tape horizontal.

SIZE CHART

| | XS | S | M | L | XL | 2XL | 3XL | 4XL |
|-------|-------|-------|-------|-------|-------|-------|-------|-------|
| Chest | 32-34 | 35-37 | 38-40 | 41-43 | 44-46 | 47-49 | 50-53 | 54-57 |

COLOR INFORMATION



Black
PMS NTR BLACK



Deep Smoke
PMS 425C



Dress Blue Navy
PMS 533C