

# Port Authority® Zephyr Reflective Hit Full-Zip Jacket. J345

With eye-catching reflective hits and colorblocking details, this unlined jacket has a smooth hand along with wind- and water-resistance.

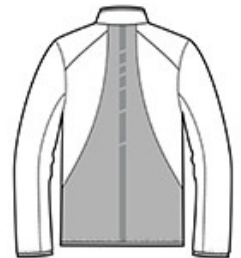
- 100% polyester shell
- Zip-through cadet collar
- Set-in sleeves
- Open front pockets
- Elastic binding at cuffs and hem

**CARE INSTRUCTIONS**

Machine wash cold with like colors. Do not bleach or use fabric softener. Tumble dry low. Remove promptly. Do not iron. Do not dry clean.



front



back

**HOW TO MEASURE**



**CHEST WIDTH**

Measure under the arm and around the fullest part of the chest with arms down, keeping tape horizontal.

**SIZE CHART**

	XS	S	M	L	XL	2XL	3XL	4XL
Chest	32-34	35-37	38-40	41-43	44-46	47-49	50-53	54-57

**COLOR INFORMATION**



Black  
PMS NTR BLACK  
C



Grey Steel/ Deep  
Black  
PMS 7540 C



Safety Yellow/  
Deep Black