



With solid and heather grid fleece options, this smooth-faced, brushed-back jacket makes a warm, sleek outer- or mid-layer. Stretch delivers easy movement and all-day comfort.

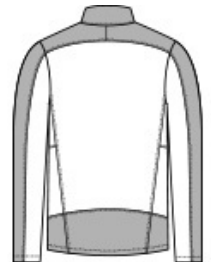
- 8-ounce, 94/6 polyester/spandex fleece
- Molded center front zipper
- Shoulder and sleeve piecing details
- Front reverse-coil zippered pockets
- Open cuffs and hem

**CARE INSTRUCTIONS**

Machine wash cold. Only non-chlorine bleach when needed. Tumble dry low. Cool iron if necessary. Do not dry clean.



front



back

**HOW TO MEASURE**



**CHEST WIDTH**

Measure under the arm and around the fullest part of the chest with arms down, keeping tape horizontal.

**SIZE CHART**

|       | XS    | S     | M     | L     | XL    | 2XL   | 3XL   | 4XL   |
|-------|-------|-------|-------|-------|-------|-------|-------|-------|
| Chest | 32-34 | 35-37 | 38-40 | 41-43 | 44-46 | 47-49 | 50-53 | 54-57 |

**COLOR INFORMATION**



Deep Black  
PMS BLACK C



Grey Smoke  
Heather/ Grey  
Smoke



River Blue Navy  
PMS 533C