

Eddie Bauer

**Eddie Bauer® Ladies 1/2-Zip Microfleece Jacket
EB227**



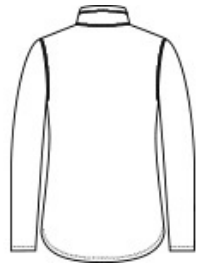
Warmth and comfort-without the bulk. With flatlock stitching throughout, this lightweight, versatile jacket is warm on its own or layers easily under another jacket when it's cold. Reverse coil zippers, open cuffs and hem. Princess seams, scallop hem and embroidered Eddie Bauer contrast logo on right hem. Made of 5.3-ounce, 100% polyester microfleece with an anti-pill finish.

CARE INSTRUCTIONS

Machine wash cold. Only Non-chlorine bleach when needed. Tumble dry low. Cool iron if necessary.

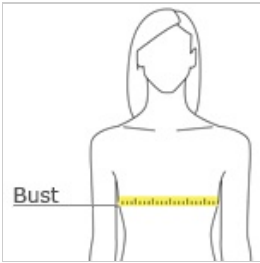


front



back

HOW TO MEASURE



BUST

Measure under the arm and around the fullest part of the bust with arms down, keeping tape horizontal.

SIZE CHART

	XS	S	M	L	XL	2XL	3XL	4XL
Size	2	4/6	8/10	12/14	16/18	20/22	24/26	28/30
Chest	32-33	34-35	36-37	38-40	41-43	44-46	47-49	50-52

COLOR INFORMATION



Black
PMS BLACK C



Grey Steel
PMS 7540c



Ivory
PMS