



## District® Women's Perfect Tri® Long Sleeve Tunic Tee. DT132L



Long sleeve tunic version of our lightweight and soft crew.

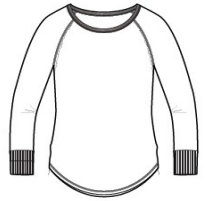
- 4.5-ounce, 50/25/25 poly/combed ring spun cotton/rayon, 32 singles
- Tear-away label
- Raw edge detail at armholes
- Coverstitch details
- 1x1 Rib knit neck
- Rib knit elongated cuffs
- Longer tunic length
- Curved hem

Please note: This product is transitioning from woven labels to tear-away labels. Your order may contain a combination of both labels.

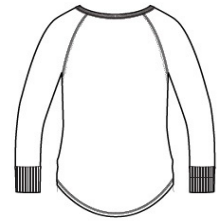
*Tri-Blend fabric infuses each garment with unique character. Please allow for slight color variations. Due to the heat sensitivity of tri-blend fabrics, special care must be taken throughout the printing process. Consult your decorator or ink supplier for best printing practices.*

### CARE INSTRUCTIONS

Machine wash cold, with like colors. Only non-chlorine bleach. Tumble dry low. Warm iron if necessary.

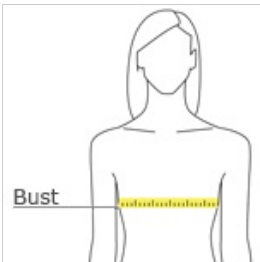


front



back

### HOW TO MEASURE



#### BUST

Measure under the arm and around the fullest part of the bust with arms down, keeping tape horizontal.

### SIZE CHART

	XS	S	M	L	XL	XXL	3XL	4XL
Size	2	4/6	8/10	12/14	16/18	20/22	24/26	28/30
Bust	32-34	35-36	37-38	39-41	42-44	45-47	48-51	52-55

### COLOR INFORMATION



Black Frost  
PMS 426C



Blush Frost  
PMS 2341C



Grey Frost  
PMS COOL GRAY  
10C



Navy Frost  
PMS 2379C



White