



# CornerStone® Washed Duck Cloth Chore Coat. CSJ50

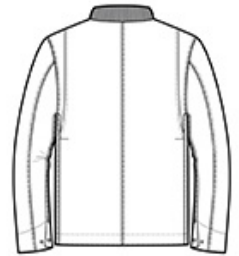


In the shop, on the site or on the street, this enzyme-washed chore coat will keep you warm as you get the work done. Extra-durable, this versatile coat has a worn-in look, soft feel and longer length for additional coverage.

- 12-ounce, 100% cotton enzyme-washed duck cloth
- 100% acrylic flannel body lining
- 3-ounce polyfill quilted polyester sleeve lining
- Corduroy-trimmed collar
- Metal rivets at crucial stress points
- Flap chest pockets
- Adjustable snap cuffs
- Front hand warmer pockets
- Interior pockets: one with snap closure; the other is open
- Port Pocket™ for easy embroidery access



front



back

## HOW TO MEASURE



### CHEST WIDTH

Measure under the arm and around the fullest part of the chest with arms down, keeping tape horizontal.

## SIZE CHART

	XS	S	M	L	XL	2XL	3XL	4XL
Chest	33-34	35-37	38-40	41-44	46-48	49-51	52-55	56-59

## COLOR INFORMATION



Black  
PMS NTR BLACK



Duck Brown  
PMS 7568 C



Navy  
PMS 433C

C