



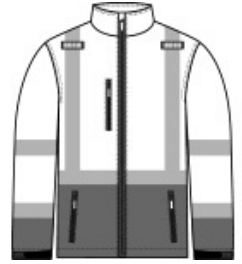
# CornerStone<sup>®</sup> ANSI 107 Class 3 Soft Shell Jacket CSJ503

This warm performance soft shell combines superior weather protection with the highest class of visibility.

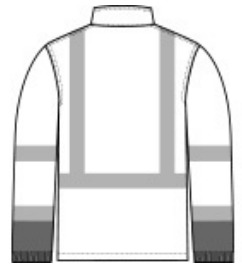
- 100% polyester woven shell with durable water-repellent (DWR) finish bonded to a water-resistant, breathable film insert and a 100% polyester microfleece lining
- Black bottom front and lower sleeves for a cleaner appearance
- Fabric waterproof rating: 5000MM
- Fabric breathability rating: 5000G/M2
- Full-length interior storm flap with chin guard
- Durable, reflective 2-inch tape meets ANSI 107 requirements and provides 360-degree visibility on body and sleeves; tape is bonded to fabric
- Molded right chest, hand and center front zippers with rubber pulls
- Mic clips at shoulders
- Elastic cuffs with adjustable hook and loop closures and rubber tabs
- Adjustable drawcord hem
- This garment must be fully zipped to be in compliance with ANSI 107 standards

### CARE INSTRUCTIONS

Machine Wash Cold. Only Non-Chlorine Bleach When Needed. Do Not Use Fabric Softener. Tumble Dry Low. Cool Iron If Necessary.

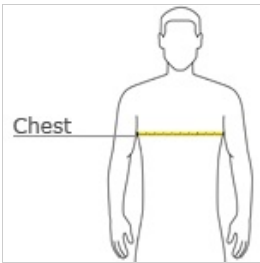


front



back

### HOW TO MEASURE



#### CHEST WIDTH

Measure under the arm and around the fullest part of the chest with arms down, keeping tape horizontal.

### SIZE CHART

	S	M	L	XL	2XL	3XL	4XL	5XL
Chest	35-37	38-40	41-43	44-46	47-49	50-53	54-57	58-60

### COLOR INFORMATION



Safety Yellow