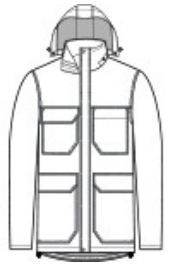


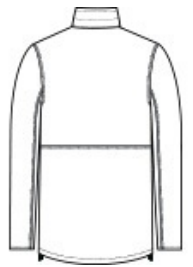


Insulated and fully seam-sealed, this weather-resistant parka is built to protect you from the elements so you can take on almost any tough work environment.

- 100% polyester w oven 300-denier oxford shell w ith durable w ater-repellent (DWR) finish
- 5.2-ounce, 100% polyfill insulation diamond quilted body
- 3.5-ounce, 100% polyfill insulation diamond quilted hood and sleeves
- Fabric w aterproof rating: 5000MM
- Fabric breathability rating: 5000G/M2
- Triple-needle stitching
- Rivet and snap details throughout
- Fully seam-sealed
- Adjustable, snap-removable hood
- Full-length exterior storm flap w ith snap closure
- Four front bellow ed pockets w ith flaps and hook and loop closures, side entries
- Molded center front zippered closure
- Open cuffs w ith interior rib knit
- Adjustable draw cord hem
- Decoration access pocket



front

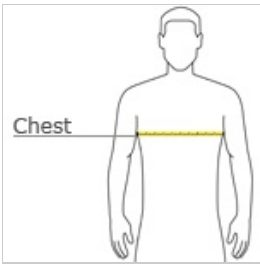


back

**CARE INSTRUCTIONS**

Machine Wash Cold. Do Not Use Softener. Only Non-Chlorine Bleach When Needed. Tumble Dry Low. Cool Iron, if Necessary. Do Not Dry Clean.

**HOW TO MEASURE**



**CHEST WIDTH**

Measure under the arm and around the fullest part of the chest w ith arms dow n, keeping tape horizontal.

**SIZE CHART**

	XS	S	M	L	XL	2XL	3XL	4XL
Chest	32-34	35-37	38-40	41-43	44-46	47-49	50-53	54-57

**COLOR INFORMATION**

Please note: PMS code information is shown only when an exact match is available.



Black  
PMS BLACK C



Iron Grey  
PMS 7540C



Navy  
PMS 532C