



CornerStone® ANSI 107 Class 2 Mesh Long Sleeve Tee. CS201



This breathable, moisture-wicking mesh tee delivers high visibility and on-the-job comfort.

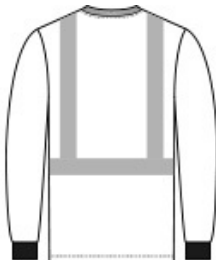
- 4.1-ounce, 100% polyester birdseye mesh
- Durable, reflective 2-inch tape meets ANSI 107 requirements and provides 360-degree visibility on body
- 1x1 rib knit neck
- Back neck tape
- Left chest pocket
- 1x1 rib knit cuffs

CARE INSTRUCTIONS

Machine wash cold. Do not bleach. Tumble dry low.
Permanent press. Do not iron. Do not dry clean. Max- 25 washes.



front



back

HOW TO MEASURE



CHEST WIDTH
Measure under the arm and around the fullest part of the chest with arms down, keeping tape horizontal.

SIZE CHART

| | S | M | L | XL | 2XL | 3XL | 4XL |
|-------|-------|-------|-------|-------|-------|-------|-------|
| Chest | 35-37 | 38-40 | 41-43 | 44-46 | 47-49 | 50-53 | 54-57 |

COLOR INFORMATION



Safety Orange Safety Yellow